

State of Florida
Department of Transportation



FDOT Connect2024
Installation Guide

APRIL 2024

PLEASE READ THIS ENTIRE DOCUMENT PRIOR TO INSTALLATION.

**THIS GUIDE CONTAINS CRITICAL INFORMATION ON SOFTWARE VERSIONS
AND ADDITIONAL CONFIGURATION STEPS NECESSARY FOR
A SUCCESSFUL INSTALLATION OF THE FDOT SOFTWARE.**

**NOTE: AFTER INSTALLING BENTLEY CONNECT EDITION APPLICATIONS, DO NOT LAUNCH THE
APPLICATION UNTIL YOU HAVE INSTALLED THE FDOTCONNECT2024 SOFTWARE FIRST**

**FAILING TO FOLLOW THE STEP BY STEP INSTRUCTIONS OUTLINED IN THIS GUIDE WILL NECESSITATE
UNINSTALLING AND REINSTALLING THE SOFTWARE.**

PRODUCTION SUPPORT CADD OFFICE

TALLAHASSEE, FLORIDA

<http://www.fdot.gov/cadd/>

Installation Quick Guide

FDOTConnect2024 is certified for use with Bentley Connect Edition applications of the 2024 schema. For specific certified version numbers, please see the FDOTConnect2024 section of the “Supported Software Versions” of the CADD Office Website: [Current Supported Versions \(fdot.gov\)](https://www.fdot.gov/cadd-office-website/current-supported-versions)

Note: This installation guide describes the steps for installing FDOTConnect2024 for OpenRoads Designer. *The steps to install FDOTConnect2024 for Microstation Connect Edition or OpenBridge Modeler are essentially the same.*

Through selecting the default installation options, FDOTConnect2024 can be installed as a side-by-side installation, co-existing with previous versions of FDOTConnect and the Bentley software.

Workstation Only Install for Standalone Workstation

For a standalone workstation installation of the FDOTConnect2024 workspace for use with Bentley Connect Edition software such as OpenRoads Designer Connect Edition and Microstation Connect Edition:

1. First, install Bentley OpenRoads Designer
 - a. We recommend right-clicking the installer and selecting **“Run As Administrator.”**
 - b. Select the defaults when installing OpenRoads Designer.
2. Second, install FDOTConnect2024
 - a. A typical workstation installation location would be “C:\FDOTConnect2024\”
 - b. Launch “Workspace Doctor” from the FDOTConnect2024 desktop folder. Select the “Configure” button.
 - c. Restart your machine before launching FDOTConnect2024
 - d. Select “Custom Configurations from the OpenRoads backstage and the FDOT workspace from the OpenRoads Designer workspace selection dropdown before creating a project.
3. See the rest of this installation guide for full installation instructions.

Client / Server Install for FDOTConnect2024

To install the FDOTConnect2024 workspace for use with Bentley OpenRoads Designer Connect Edition and other Connect Edition software such as Microstation Connect Edition:

1. First, install FDOTConnect2024 Server Only Install on your CADD server and take note of the location in which you have installed it, bearing in mind that it can co-exist side-by-side with an existing installation of previous versions of the FDOTConnect software if installed in a separate location.
2. Second, install Bentley OpenRoads Designer on the client machine
 - a. Be sure to right-click on the installation .EXE and select **“Run As Administrator.”**
 - b. Take the defaults when installing OpenRoads Designer
3. Second, install FDOTConnect2024 Client Only Install on the client machine
 - a. The typical local client installation location for a Client Only Install is C:\FDOTConnect2024\.

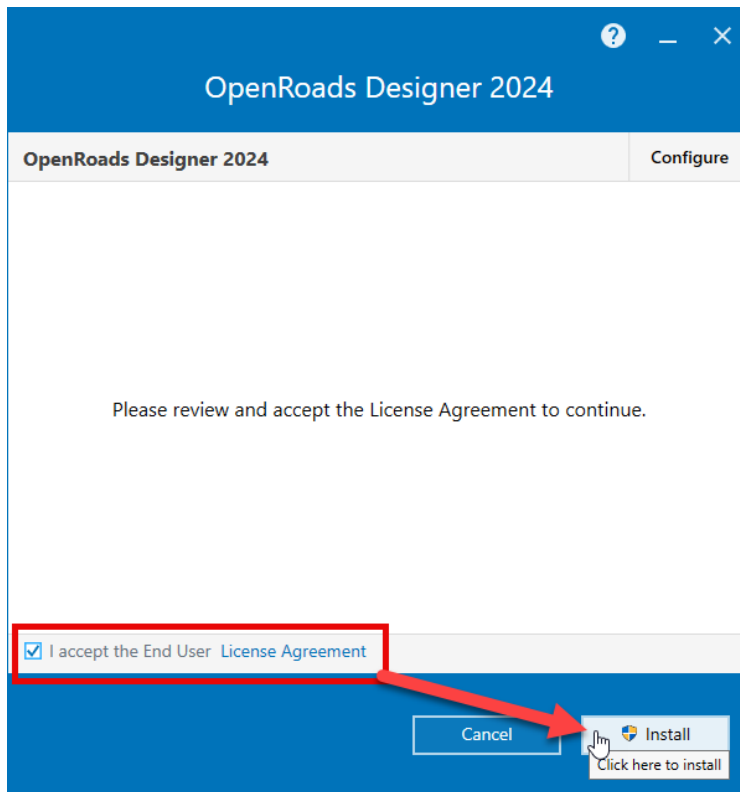
- b. Launch “Workspace Doctor” from the FDOTConnect2024 desktop folder. Select the “Configure” button.
- c. After installing the FDOTConnect2024 Client Only Install, restart the machine and launch FDOTConnect2024 from the icon in the FDOTConnect2024 desktop folder.
- d. Select “Custom Configurations from the OpenRoads backstage and the FDOT workspace from the OpenRoads Designer workspace selection dropdown before creating a project.

Do not install FDOTConnect2024 Server on top of the same location as existing installations of previous FDOTConnect software.

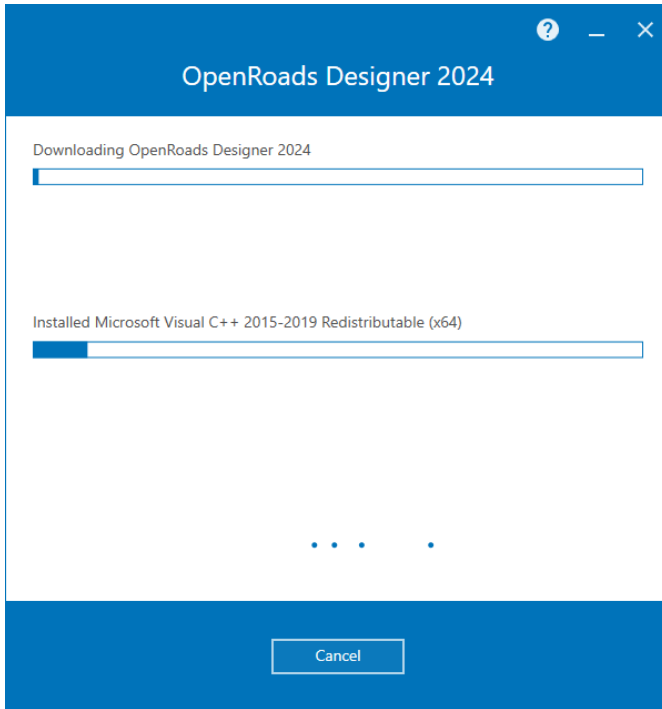
Installing Bentley OpenRoads Designer CE

The first step to installing FDOTConnect2024 is to install OpenRoads Designer CE or other supported Bentley Connect Edition Applications before running the FDOTConnect2024 Install.

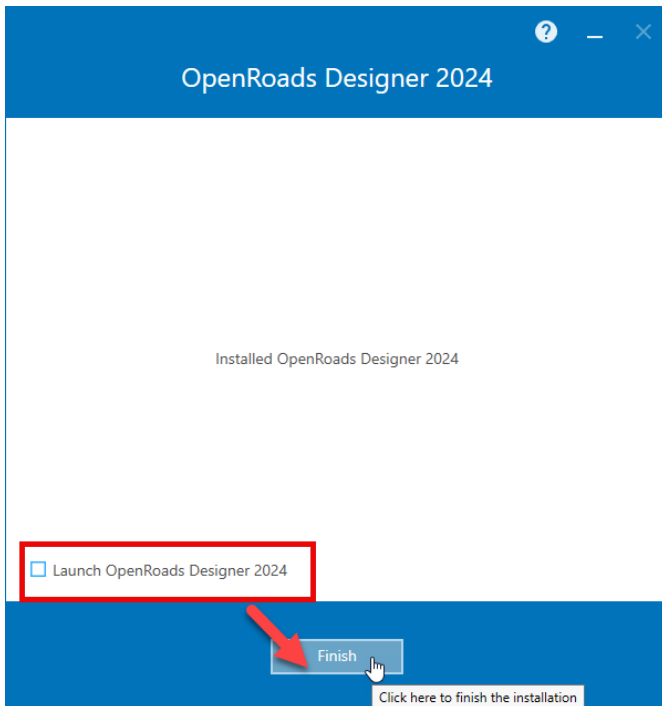
1. Launch the installer .EXE for Bentley OpenRoads Designer Connect Edition. Accept the License Agreement and select “Install” as shown below.



2. Wait patiently as OpenRoads Designer is installed.



3. Upon completion, be sure to **UNCHECK** "Launch OPenRoads Designer" before selecting "Finish." This is a critical step in proper installation and configuration of the FDOT software. Do no launch OpenRoads Designer before installing the FDOT software.



Installing FDOTConnect2024 Workstation – Standalone Workstation

After installing Bentley OpenRoads Designer, you may now install FDOTConnect2024 Workstation Only Install. Typical FDOTConnect2024 Workstation installation location is: C:\FDOTConnect2024\

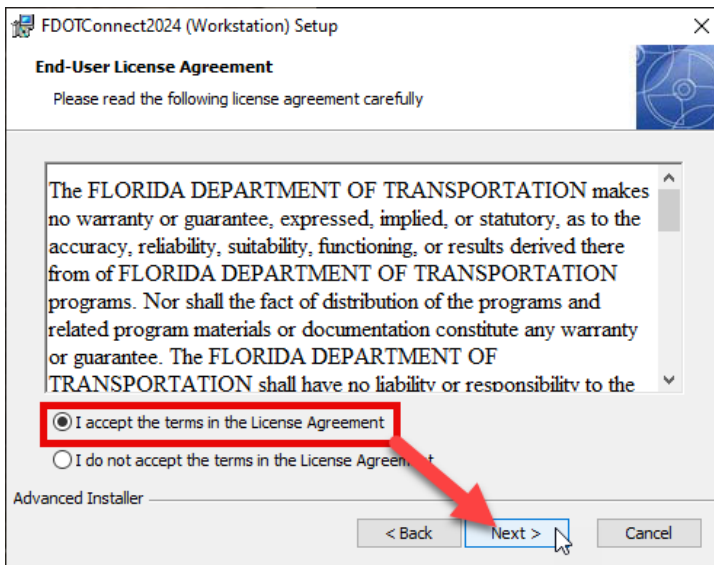
This location allows FDOTConnect2024 to co-exist with a side-by-side installation of FDOTConnect2023 for 2023 versions of the Bentley Connect Edition applications.

Double click FDOTConnectWorkstation2024.MSI to begin installation.

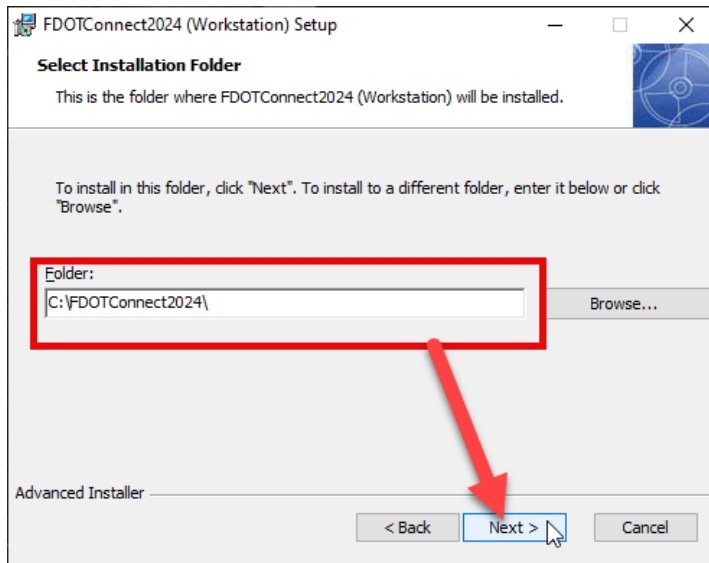
1. The first dialog of the installer appears. Select “NEXT.”



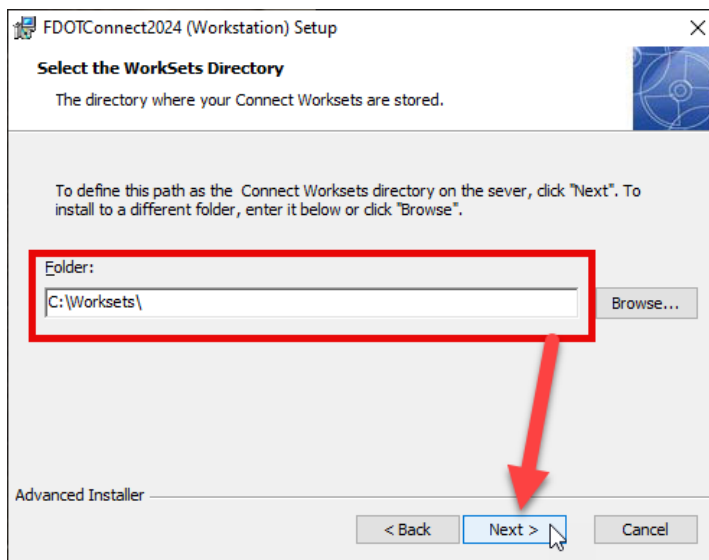
2. Accept the terms of the license agreement and select “NEXT.”



3. Confirm the installation location of the FDOTConnect2024 Workstation.



4. Confirm the location for your Worksets or Projects and select "NEXT."



Note: While the Worksets folder can be set to a custom location such as a server, it is critical that the Worksets folder is NOT set to any location INSIDE the FDOTConnect2024 installation folder.

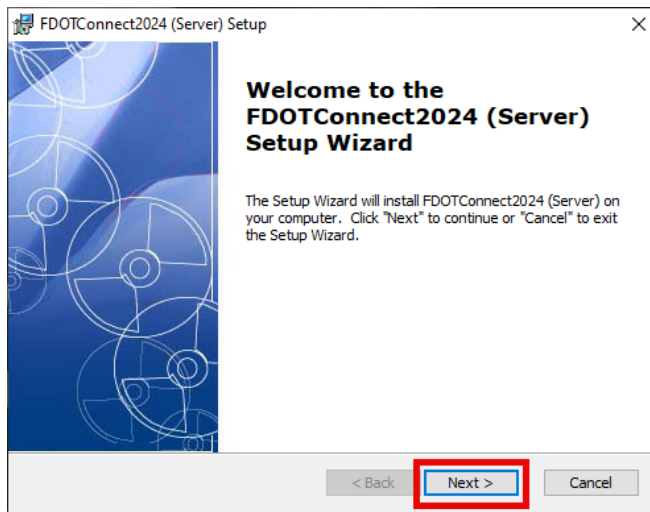
5. Select "INSTALL" to complete the installation, and then restart the computer.

Installing FDOTConnect2024 Server Installation – CLIENT / SERVER Install

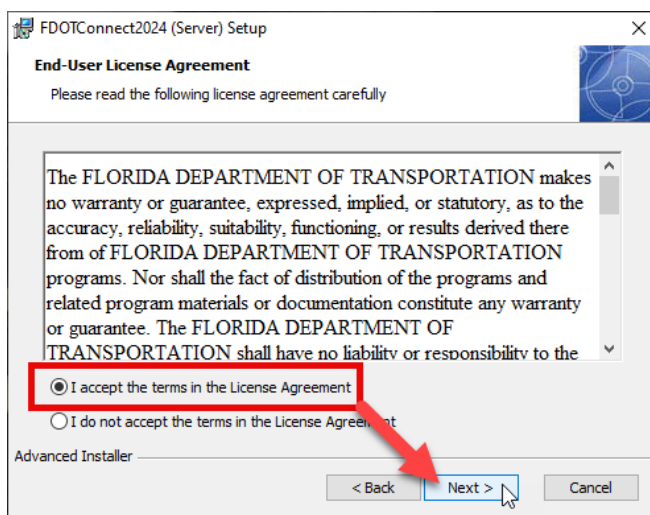
After installing OpenRoads Designer CE or other supported Bentley Connect Edition applications on client machines, the next step is to install the Server installation on your CADD server.

You can install the FDOTConnect2024 Server Only Install directly by logging into your server and installing it on the shared local hard drive or from a client machine, being sure to specify the desired location to install the Server Only Install.

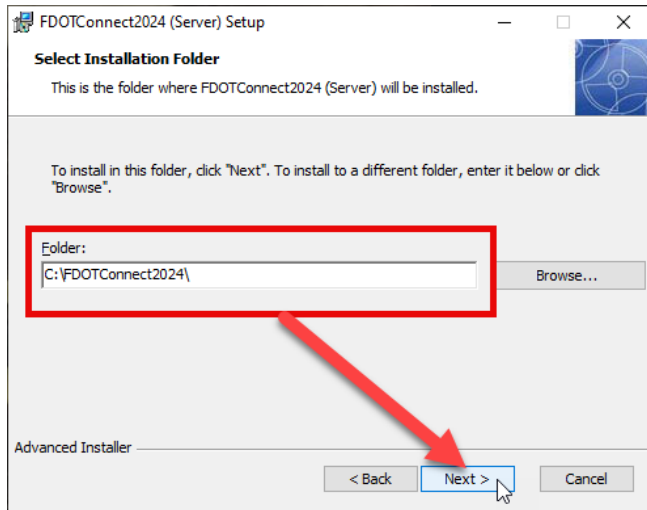
1. Double-click the FDOTConnect2024 Server installation .MSI to launch the installation wizard.



2. The FDOT Connect Server Setup dialog appears. Click “NEXT.”



3. Accept the terms of the License Agreement and select “NEXT.”



4. Specify the installation location on the Server. (In the above example, the installation is being performed locally on the **C:** drive of the server).
5. Select **"NEXT."**
6. Select **"INSTALL."**
7. Wait patiently while FDOTConnect2024 Server is installed to your CADD Server.
8. When installation is complete, select **"FINISH"**

Installing FDOT Connect Client – CLIENT / SERVER Install

After installing FDOTConnect2024 Server Only Install and Bentley OpenRoads Designer CE, you may now install FDOTConnect2024 Client. In the standard FDOT installation practices, FDOT Connect Client is installed to “C:\FDOTConnect2024\” on the client machine and is the default installation location specified by the installer.

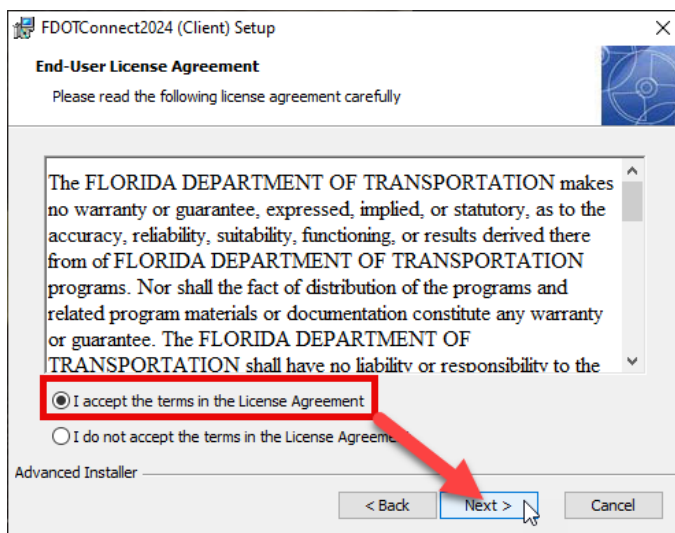
This location allows for side-by-side installation with existing FDOTConnect2023 software.

Double click FDOTConnectClient2024.MSI to begin installation.

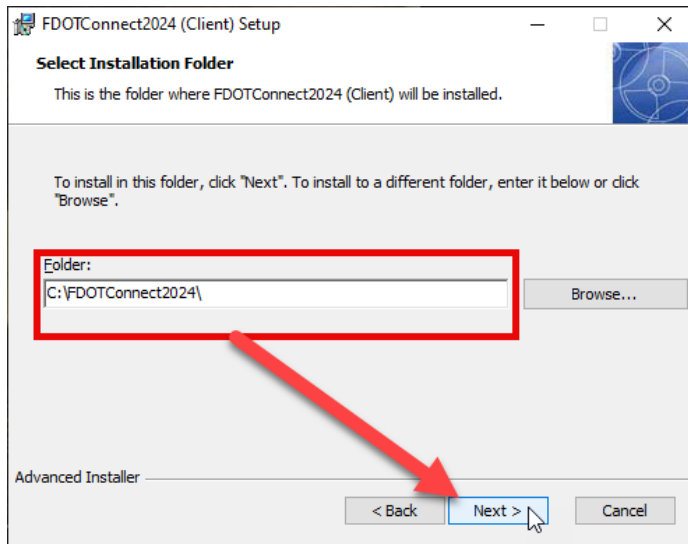
1. The first dialog of the installer appears. Select “NEXT.”



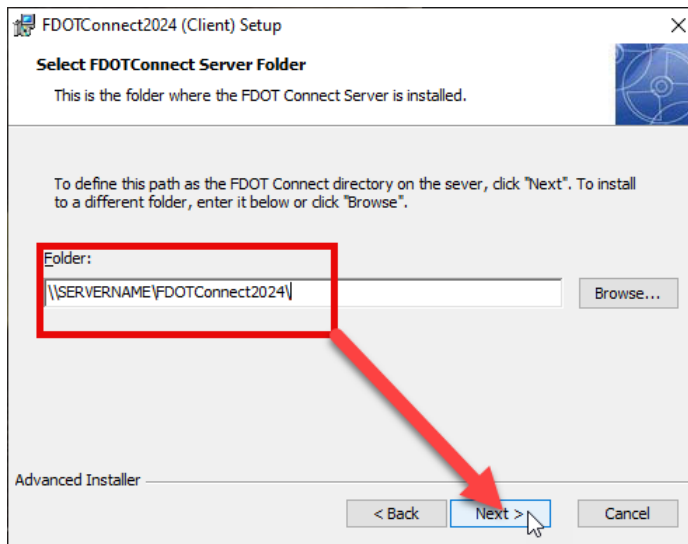
2. Accept the terms of the license agreement and select “NEXT.”



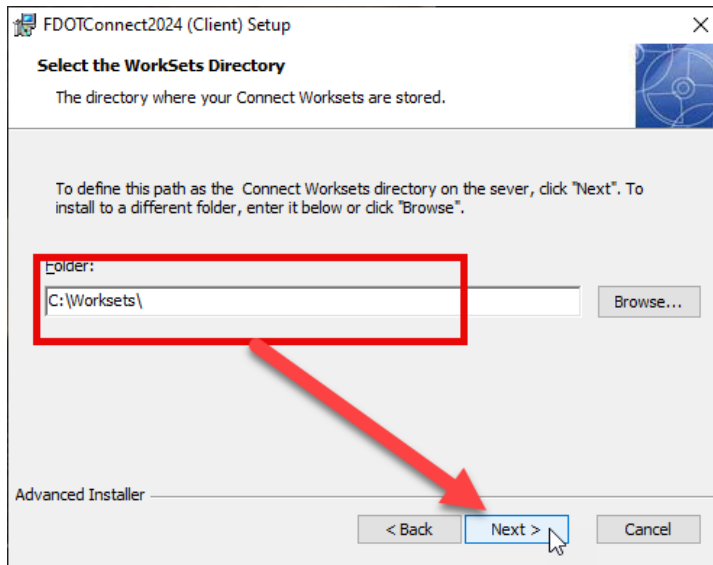
3. Confirm the installation location of the FDOTConnect2024 Client on the local client machine.



4. The dialog now prompts you for the location of the FDOTConnect2024 Server Installation. You can enter the Server location in the field or select the browse button to browse to the location of your FDOTConnect2024 Server installation. Click "NEXT" to continue.



6. Define the location for your Worksets or Projects and select “NEXT.”



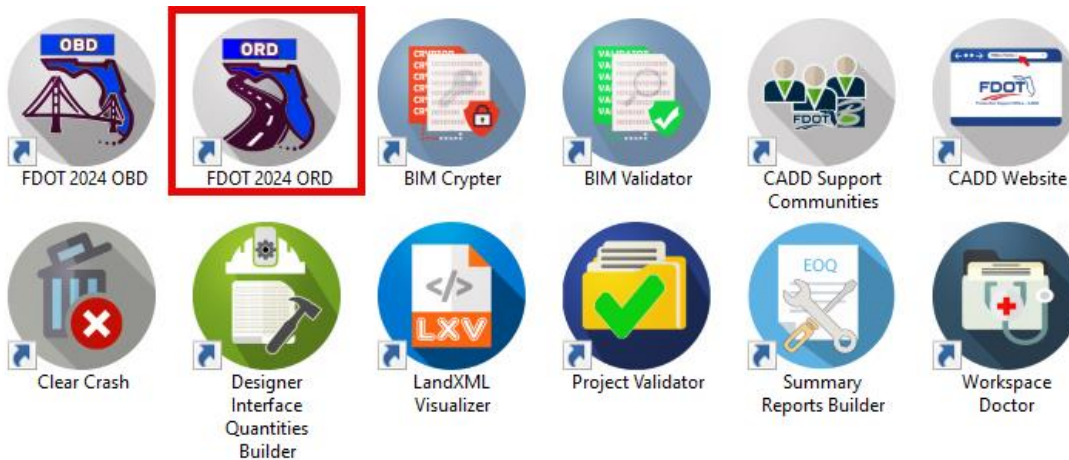
Note: While the Worksets folder can be set to a custom location such as a server, it is critical that the Worksets folder is NOT set to any location INSIDE the FDOTConnect2024 folder.

5. Select “INSTALL” to complete the installation.

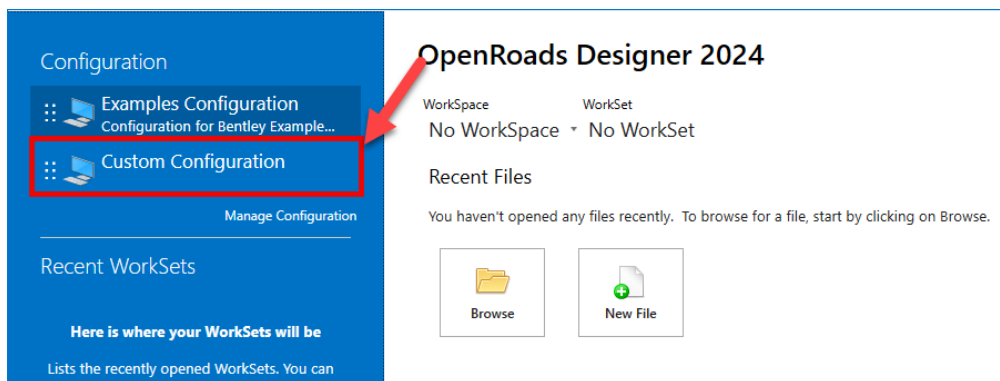
Launching FDOTConnect2024 for OpenRoads Designer

To use FDOTConnect2024 and the FDOT workspace for OpenRoads Designer Connect Edition and other Bentley Connect Edition applications, it is critical to launch the application from the FDOT launch shortcuts in the FDOTConnect2024 desktop folder or the FDOT launch shortcuts on the desktop.

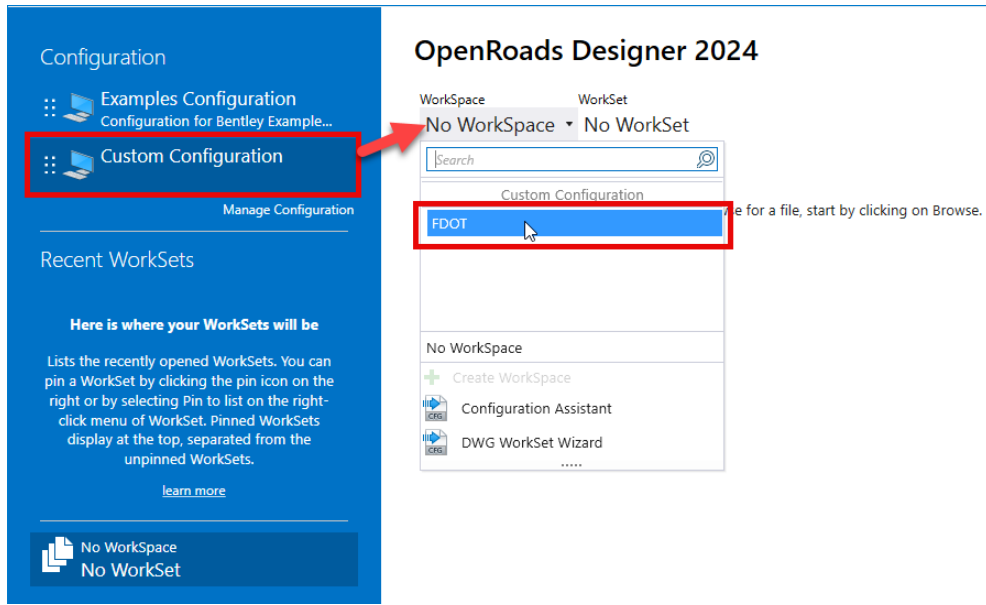
Launching OpenRoads from the default Bentley launch shortcut, or simply double-clicking a DGN file to launch OpenRoads Designer will NOT allow you to access all of the FDOT resources correctly.



1. Double-click the FDOT launch shortcut corresponding to the desired application. (e.g., “FDOT 2024 ORD” to launch OpenRoads Designer Connect Edition with FDOTConnect2024)

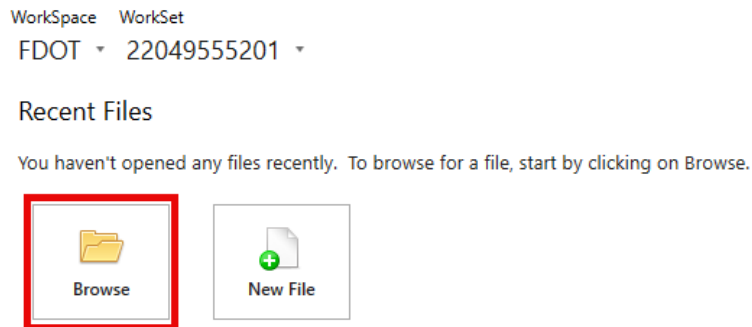


2. In the OpenRoads backstage, in the upper left, select “Custom Configuration” to access the custom configurations, including the FDOT workspace.



3. After selecting “Custom Configuration,” access the Workspace Selection Menu and select the FDOT workspace.

OpenRoads Designer 2024



4. You can now select a Workset from the Workset Selection Menu, and browse for a file within that Workset.

Note: No work should be done in the 0_WORKSET_TEMPLATE workset. This is the template from which all FDOT worksets are created. Also, no file should ever be opened while the 0_WORKSET_TEMPLATE is set as the active workset.