



## Florida Department of Transportation

RON DESANTIS  
GOVERNOR

605 Suwannee Street  
Tallahassee, FL 32399-0450

JARED W. PERDUE, P.E.  
SECRETARY

**April 24, 2025**

### **ADDENDUM NO. 1**

**To: ALL PROPOSAL HOLDERS**  
**FINANCIAL ITEM NUMBER: 42215127285**  
**CONTRACT NUMBER: E3X68-R0**

DESCRIPTION: Work Document-Driven Contract consist of providing all labor, materials, equipment, and incidentals necessary for maintenance of the Bold Landscape sites in Franklin, Gadsden, Jefferson, Leon, and Wakulla Counties as specified and outlined in the Contract Documents.

---

BIDS TO BE RECEIVED: ~~Thursday May 8, 2025~~ Thursday May 15, 2025

If you are a PROPOSAL HOLDER, this is your authorization to make the following changes to the plans and specification packages you now have for the subject project:

**- The Letting date for this proposal has been moved to May 15, 2025**

**-The estimated budget has been increased to \$800,000.00**

**Delete from the Specification Package the following pages and replace them with the Attached pages:**

**-Specification Page 1: Intent and Scope updates the Budget Estimate**

**-Specification Page 3: Updates the Table of Contents to include Tree Trimming and Removal**

**-Specification Page 8: Updates Article 3-1 and 4-1 to raise the budget estimate to \$800,000.00.**

**Specification Pages 39 through 42: Updates Section 580-40 Heading Information and all pages affected by insertion of additional text.**

**-Page 49: Appendix Table A**

**-Page 50: Inserted new sheet; expands Appendix A as referenced on page 49, foot note #3.**

**- Quantities: Quantities have been updated. Please see Addendum No. 1 Proposal E3Y68-R0 Update Quantities attached to view.**

Please use this revision when preparing your bid.

Electronic Bids will be received until 10:00 a.m. local time on May 15, 2025, in the District Three Procurement Services Office, Administration Building, 1074 Highway 90, Chipley, Florida.

AMENDMENT NOTIFICATION

If you are a PROPOSAL HOLDER, please go to the CPP Online Ordering System at [CPP.Web](#) to download Amendment No. 1, file [E3Y68-R0.001](#).

Also, all PROPOSAL HOLDERS please acknowledge receipt of the addendum under the Acknowledgement of Amendments tab on your electronic bid.

If you have any further questions please contact Roland Ybarra by phone at (850) 330-1364 or by email at [roland.ybarra@dot.state.fl.us](mailto:roland.ybarra@dot.state.fl.us).

Sincerely,

Ranae Dodson  
District Procurement Manager

RD:ry

c.c. Tim Hendrix, District Maintenance Engineer, file

April 22, 2025  
PREPARED BY: Roger Mumford  
Jeff Kerwin



SPECIFICATIONS PACKAGE  
Contract Number: E3Y68-R0  
FINANCIAL PROJECT ID(S).422151-2-72-85  
CONTRACT CALENDAR DAYS: THRU JUNE 30, 2026  
DISTRICT THREE  
FRANKLIN, GADSDEN, JEFFERSON, LEON, AND WAKULLA COUNTIES

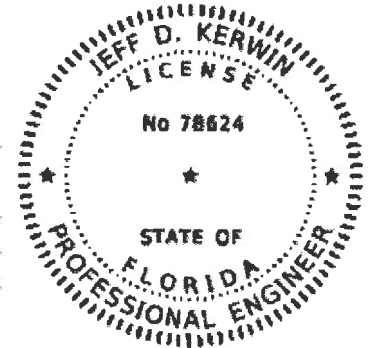
**Intent & Scope:** The Improvements under this Work Document-Driven Contract consist of providing all labor, materials, equipment, and incidentals necessary for maintenance of the Bold Landscape sites in Franklin, Gadsden, Jefferson, Leon, and Wakulla Counties as specified and outlined in the Contract Documents. Obtain specification packages and landscape plans, for the sites provided in the work document, from the Department’s Contract Proposal Processing Online Ordering system (CPP) website. **Mobilization and Maintenance of Traffic are incidental to the other pay items listed. Contractor Experience Form number 850-070-09 (Landscaping) is required to be submitted with bid. This contract has a budgetary estimate of \$800,000.00**

The FY 2024-25 Edition of the Florida Department of Transportation Standard Specifications is revised as follows: Special Provisions, Supplemental Specifications.

*I hereby certify that this specifications package has been properly prepared by me, or under my responsible charge, in accordance with procedures adopted by the Florida Department of Transportation.*

This item has been digitally signed and sealed by Jeff D. Kerwin on the date adjacent to the seal. Printed copies of this document are not considered signed and sealed and the signature must be verified on any electronic copies.

	Digitally signed by: Jeff
Date:	<u>April 22, 2025</u> Kerwin
State of Florida,	Date: 2025.04.22 16:36:
Professional Engineer, License No.:	<u>78624</u> 52 -04'00'
Firm/Agency Name:	<u>Florida Department of Transportation</u>
Firm/Agency Address:	<u>17 Commerce Blvd</u>
City, State, Zip Code:	<u>Midway, FL 32343</u>
Page(s):	<u>52</u>



CHEMICAL VEGETATION CONTROL ..... 36  
TREE TRIMMING AND REMOVAL ..... 39  
TURF MATERIALS ..... 41  
**SUPPLEMENTAL SPECIFICATIONS..... 43**  
    LEGAL REQUIREMENTS AND RESPONSIBILITY TO THE PUBLIC..... 44  
**APPENDICES ..... 48**  
    APPENDIX A: BOLD LANDSCAPE LOCATIONS..... 49  
    APPENDIX B: DISTRICT SPECIFIED PROJECT LIST ..... 51  
**THIS COMPLETES THIS SPECIFICATIONS PACKAGE ..... 52**

authorized, completed, and approved by the Engineer. The budget estimate amount for this contract is \$800,000.00.

**AWARD AND EXECUTION OF CONTRACT – AWARD OF CONTRACT.  
(REV 4-27-16) (FY 2024-25)**

SUBARTICLE 3-2.2 is deleted.

**AWARD AND EXECUTION OF CONTRACT – PUBLIC RECORDS.  
(REV 10-17-16) (FA 10-24-16) (FY 2024-25)**

ARTICLE 3-9 is expanded by the following:

**IF THE CONTRACTOR HAS QUESTIONS REGARDING THE APPLICATION OF CHAPTER 119, FLORIDA STATUTES, TO THE CONTRACTOR'S DUTY TO PROVIDE PUBLIC RECORDS RELATING TO THIS CONTRACT, CONTACT THE CUSTODIAN OF PUBLIC RECORDS AT:**

**District 3  
850-330-1894  
[D3preustodian@dot.state.fl.us](mailto:D3preustodian@dot.state.fl.us)  
Florida Department of Transportation  
District 3 - Office of General Counsel  
1074 Highway 90 East  
Chipley, FL 32428**

**SCOPE OF WORK – INTENT OF CONTRACT.  
(REV 2-15-17) (FY 2024-25)**

ARTICLE 4-1 is deleted and the following substituted:

**4-1 Intent and Scope.**

The Improvements under this Work Document-Driven Contract consist of providing all labor, materials, equipment, and incidentals necessary for maintenance of the Bold Landscape sites in Franklin, Gadsden, Jefferson, Leon, and Wakulla Counties as specified and outlined in the Contract Documents. Obtain specification packages and landscape plans, for the sites provided in the work document, from the Department's Contract Proposal Processing Online Ordering system (CPP) website. **Mobilization and Maintenance of Traffic are incidental to the other pay items listed. Contractor Experience Form number 850-070-09 (Landscaping) is required to be submitted with bid. This contract has a budgetary estimate of \$800,000.00**

The summary of pay items for this project is listed in the Bid Price Proposal.

1. The area, in acres, treated with herbicide using the strip, hand, wiping, or mower methods of application.
2. The area, in square feet, treated with herbicide using the spot or basal bark (trees less than 12 inches in diameter) methods of application.
3. The length, in linear feet, of root control fabric installed.
4. For each tree treated with herbicide using the basal bark and frill and girdle (trees greater than 12 inches in diameter) methods of application.

**580-33.7 Basis of Payment.**

Prices and payment will be full compensation for all work specified in this Section including furnishing and applying all materials, labor, equipment, and incidentals necessary to complete the work as authorized.

When applying herbicide utilizing inside mower deck application, price for the herbicide application includes the mowing operation and no separate payment for mowing will be made.

Payment will be made under the items as specified in the Bid Price Proposal.

**TREE TRIMMING AND REMOVAL.**

**(REV 3-9-18) (FY 2024-25)**

The following new Section is added after Section 571:

**SECTION 580-40  
TREE TRIMMING AND REMOVAL**

**580-40.1 Description.**

Trim or prune trees and vegetation, remove undesired trees and vegetation, and dispose of resulting debris as directed in work document.

Perform all work meeting the requirements of recognized and approved arboriculture principles with emphasis on tree health and symmetry as set forth in *The American National Standard for Tree Care Operations – Tree, Shrub and Other Woody Plant Maintenance – Standard Practices* (ANSI A300). Perform all work without damage to trees and shrubs that are intended to remain in the work area.

Prior to beginning work, report all damaged fence, fence posts and other appurtenances within the right-of-way to the Engineer.

**580-40.2 Equipment.**

Use equipment designed for the performance of work described herein. Maintain equipment in good repair and operating condition at all times, meeting all applicable safety requirements. Maintain safety devices at all times while the equipment is in use.

Do not use equipment on the Department's right-of-way that damages pavement, curbs, drainage structures, sidewalks, guardrail turf areas, or any other Department assets. Repair damage resulting from work activities to meet the requirements of the current edition of the Department's Standard Plans at no cost to the Department before resuming project activities.

### **580-40.3 Tree Trimming.**

**580-40.3.1 General:** Trim the trees to the height and width described in the work document. Remove all dead, dying, diseased, decaying, interfering, suckering, obstructing and weak branches.

**580-40.3.2 Crown Reduction:** Ensure the natural shape and structure of the tree should be maintained. If the height of a tree must be reduced, all cuts will be made to strong laterals or to the parent limb.

**580-40.3.3 Power Shearing:** Cut and trim vegetation to the height and width described in the work document using mobile, mechanical equipment capable of vertical, horizontal and angle cuts.

### **580-40.4 Tree and Shrub Removal.**

**580-40.4.1 General:** Cut and remove trees and shrubs within the right-of-way at the locations specified in the work document or Contract. When necessary for the protection of public safety, use block and tackle to safely lower the severed branches and trunk sections. Remove the main trunk at or below the ground surface.

Treat the stumps with herbicide labeled for stump use and approved by the Engineer. Use of soil sterilant or residual type materials will not be permitted.

Ensure trees marked by the Engineer to remain are not to be removed or damaged.

**580-40.4.2 Shrub Removal:** Cut and remove vegetation with multiple trunks extending from a common root-base (i.e., Brazilian pepper, myrtle, palmettos, bamboo, palms, etc.) flush with the ground surface. Remove all stumps and debris.

**580-40.4.3 Tree and Shrub Removal from Fence Lines:** Unless specified elsewhere in the Contract Documents or Work Document, when removing tree and shrubs adjacent to the fence create a fence corridor with minimum dimensions of 10 feet wide and 15 feet high.

Create access corridors from the roadway to the corridor adjacent to the fence at locations determined by the Engineer. The minimum corridor dimensions shall be 10 feet wide and 15 feet high.

### **580-40.5 Stump Removal**

Remove stumps (including protruding roots and debris) to a depth of 12 inches below the surface of the original ground. Provide acceptable fill material, grade and compact holes or voids created by the removal of the stumps.

### **580-40.6 Disposal of Debris.**

Dispose of all debris and waste in compliance with all Federal, State, and Local Rules and Regulations.

Debris may be stockpiled in the Department's right-of-way for a period of time determined by and with the written approval of the Engineer.

With the approval of the Engineer, wood chips or grindings may be evenly distributed to a depth of no more than one inch in designated areas in the Department's right-of-way.

### **580-40.7 Quality.**

Ensure the work site and adjacent properties are clean and free of trimmings, stumps, roots, logs or any other debris at all times.

**580-40.8 Method of Measurement.**

As indicated by the pay items in the work document, payment will be for the actual measured quantities of work performed and accepted. Gaps or skips greater than 150 feet will not be included in the measurement for payment to the contractor.

When the method of compensation for tree removal is an each pay item, the size is determined by the measured diameter rounded to the nearest inch at four and one half feet above the existing ground. Vegetation with multiple trunks extending from a common root-base will be measured at a point one half the distances between the ground and the first stem or branch and will be considered as one tree.

When the method of compensation for pruning and trimming is an each pay item, the payment will be for each tree not per branch. The size is determined by the measured diameter rounded to the nearest inch at four and one half feet above the existing ground. Vegetation with multiple trunks extending from a common root-base will be measured at a point one half the distances between the ground and the first stem or branch and will be considered as one tree.

When the method of compensation for stump removal is an each pay item, the size is determined by the measured diameter of the stump rounded to the nearest inch at a point flush with the ground line as determined by the Engineer.

**580-40.9 Basis of Payment.**

Price and payment will be full compensation for all work and materials specified in this Section.

Payment will be made under the items specified in the Bid Price Proposal.

**TURF MATERIALS.**

**(REV 3-22-22) (FY 2024-25)**

SECTION 981 is deleted and the following substituted:

**981-1 General.**

The types of seed and sod will be specified in the Contract Documents. All seed and sod shall meet the requirements of the Florida Department of Agriculture and Consumer Services and all applicable state laws and shall be approved by the Engineer before installation.

All seed, sod and mulch shall be free of noxious weeds and exotic pest plants, plant parts or seed listed in the current Category I “List of Invasive Species” from the Florida Exotic Pest Plant Council (FLEPPC, <https://www.fleppc.org>). Any plant officially listed as being noxious or undesirable by any Federal Agency, any agency of the State of Florida or any local jurisdiction in which the project is being constructed shall not be used. Any such noxious or invasive plant or plant part found to be delivered in seed, sod or mulch will be removed by the Contractor at his expense and in accordance with the law.

All materials shall meet plant quarantine and certification entry requirements of Florida Department of Agriculture & Consumer Services, Division of Plant Industry Rules.

**981-2 Seed.**

The seed shall have been harvested from the previous year’s crop. All seed bags shall have a label attached stating the date of harvest, LOT number, percent purity, percent germination, noxious weed certification and date of test.

Each of the species or varieties of seed shall be furnished and delivered in separate labeled bags. During handling and storing, the seed shall be cared for in such a manner that it will be protected from damage by heat, moisture, rodents and other causes.

All permanent and temporary turf seed shall have been tested within a period of six months of the date of planting.

All permanent and temporary turf seed shall have a minimum percent of purity and germination as follows:

1. All Bahia seed shall have a minimum pure live seed content of 95% with a minimum germination of 80%.

2. Bermuda seed shall be of common variety with a minimum pure live seed content of 95% with a minimum germination of 85%.

3. Annual Type Ryegrass seed shall have a minimum pure live seed content of 95% with a minimum germination of 90%.

### **981-3 Sod.**

**981-3.1 Types:** Unless a particular type of sod is called for in the Contract Documents, sod may be either Centipede, Bahia, or Bermuda at the Contractor's option. It shall be well matted with roots. Where sodding will adjoin, or be in sufficiently close proximity to, private lawns, other types of sod may be used if desired by the affected property owners and approved by the Engineer.

**981-3.2 Dimensions:** The sod shall be taken up in commercial-size rectangles, or rolls, preferably 12 inches by 24 inches or larger, except where 6-inch strip sodding is called for, or as rolled sod at least 12 inches in width and length consistent with the equipment and methods used to handle the rolls and place the sod. Sod shall be a minimum of 1-1/4 inches thick including a 3/4-inch-thick layer of roots and topsoil. Reducing the width of rolled sod is not permitted after the sod has been taken up from the initial growing location. Use of sod with plastic netting is not permitted. If turf is delivered to the site with plastic netting, the netting shall be removed prior to planting.

**981-3.3 Condition:** The sod shall be sufficiently thick to secure a dense stand of live turf. The sod shall be live, fresh and uninjured, at the time of planting. It shall have a soil mat of sufficient thickness adhering firmly to the roots to withstand all necessary handling and be free of plastic netting. It shall be planted within 48 hours after being cut and kept moist from the time it is cut until it is planted. No sod which has been cut for more than 48 hours may be used unless specifically authorized by the Engineer. A letter of certification from the turf Contractor as to when the sod was cut, and what type, shall be provided to the Engineer upon delivery of the sod to the job site.

The source of the sod may be inspected and approved by the Engineer prior to being cut for use in the work.

### **981-4 Mulch.**

The mulch material shall be compost meeting the requirements of Section 987, hardwood barks, shavings or chips; or inorganic mulch materials as approved by the Engineer; or hydraulically applied wood fiber mulch or bonded fiber matrix (BFM) for the establishment of turf material.

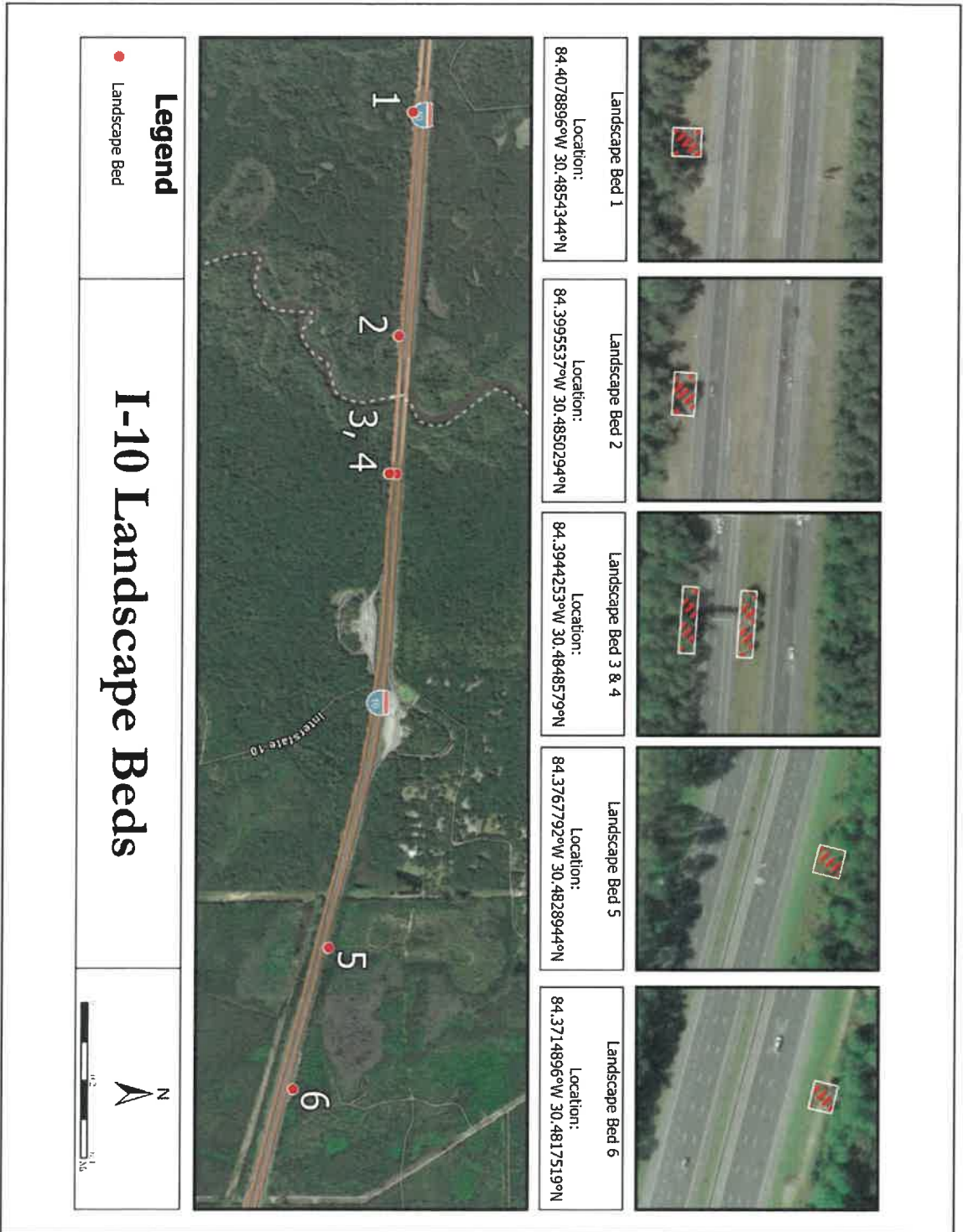
**APPENDIX A: BOLD LANDSCAPE LOCATIONS**

Installed Under FDOT Contract No.	Location/ Description
E3N06	SR 10 (US 90/Mahan) from Walden Road to Apex Drive - Leon
E3N87	SR 61 (US 319) at the Georgia state line - Leon Co
E3R73	SR 61 (Wakulla Springs Rd) at CR 2204 (Oak Ridge Road) - Roundabout - Wakulla Co.
E3P82	SR 55 Gateway in Jefferson Co.
E3P83	SR 57 Gateway in Jefferson Co
E3P81	SR 267/ Gateway at Stateline - Gadsden
E3P77	SR 63 Gateway at Stateline- Gadsden Co.
E3Q17	SR 10 (US 90) from W. of 270A to the Dollar General - Gadsden
E3S60	SR 30 (US 98) from SR 61 (US 319) to St. Mark's Trail - Wakulla
E3R23	SR 61 (US 319) at SR 30 (US 98) intersection - Wakulla Co.
E3T98	SR 30 (US 98) from West of Apalachicola Bay to Beacon St. - Franklin Co.
E3V02	SR 369 (US 319) from North of SR 267 to Leon Co. Line - Wakulla Co.
E3I94	SR 8 (Interstate 10) at Interchange 196 (SR 263, Capital Circle Northwest) - Leon Co <sup>1</sup>
E3J25	SR 8 (Interstate 10) at Interchange 199 (SR 63/US 27) - Leon Co <sup>2</sup>
E3O85	SR 8 (Interstate 10) from Exit 196 to West of Ochlockonee River bridge - Leon Co <sup>3</sup>

<sup>1</sup> Primary road corridor landscaping is maintained by the City of Tallahassee under a maintenance agreement.

<sup>2</sup> Primary road corridor landscaping is maintained by the City of Tallahassee under a maintenance agreement.

<sup>3</sup> Landscape beds to be serviced under this contract are referenced and illustrated in the Appendix as I-10 Landscape Beds. Landscaping within EB & WB rest area corridors is maintained under a separate contract (Contract #: E3V79)



## ADDENDUM No.1 PROPOSAL E3Y68-R0

### Update Quantities:

Pay Item	Description	Old Qty	New Qty
0580-5-121	LANDSCAPE- TREES, SOUTHERN RED CEDAR JUNIPERUS VIRGINIANA SILICICOLA, UP TO 8' OVERALL HEIGHT	5.00	2.00
0580-5-122	LANDSCAPE- TREES, SOUTHERN RED CEDAR JUNIPERUS VIRGINIANA SILICICOLA, 8-10' OVERALL HEIGHT	5.00	2.00
0580-5-123	LANDSCAPE- TREES, SOUTHERN RED CEDAR JUNIPERUS VIRGINIANA SILICICOLA, 11-14' OVERALL HEIGHT	5.00	2.00
0580-5-124	LANDSCAPE- TREES, SOUTHERN RED CEDAR JUNIPERUS VIRGINIANA SILICICOLA, 15-18' OVERALL HEIGHT	5.00	2.00
0580-8-10	LANDSCAPE- TREE PRUNING/TRIMMING, MANUAL, 1 TO 8" DBH	200.00	250.00
0580-8-11	LANDSCAPE- TREE PRUNING/TRIMMING, MANUAL, 8 TO 24" DBH	100.00	150.00
0580-8-12	LANDSCAPE- TREE PRUNING/TRIMMING, MANUAL, 24" AND GREATER DBH	12.00	18.00
0580-8-40	LANDSCAPE- SHRUB, PRUNING/TRIMMING INDIVIDUAL PLANT, LESS THAN 3'	1,000.00	300.00
0580-8-41	LANDSCAPE- SHRUB, PRUNING/TRIMMING INDIVIDUAL PLANT, 3' TO <6' HEIGHT	250.00	1000.00
0580-8-42	LANDSCAPE- SHRUB, PRUNING/TRIMMING INDIVIDUAL PLANT, 6' TO 10' HEIGHT	175.00	100.00
0580-9-10	LANDSCAPE-TREE, COMPLETE REMOVAL, 1" TO 8" DBH	100.00	3.00
E107-2-5	WEED CONTROL, MANUAL	100.00	52.00
E107-1-1	LITTER REMOVAL	2,000.00	3,083.00
E107-2-2	MOWING (SLOPE)	37.00	177.00
E107-2-3	MOWING (INTERMEDIATE MACHINE)	2,000.00	2,760.00
E570-6-1	FERTILIZER, SLOW RELEASE FOR TREES	2,000.00	1,000.00
E570-6-2	FERTILIZER, SLOW RELEASE FOR PALMS	1,500.00	500.00
E570-6-3	FERTILIZER, SLOW RELEASE FOR SHRUBS, ORNAMENTAL GRASS, AND GROUND COVER	1,500.00	2,500.00
E580-3-1	LANDSCAPE MAINTENANCE (WEED REMOVAL, MANUAL)	43,000.00	30,000.00
E580-326-4	MULCH WOOD CHIPS	200.00	300.00
E580-326-5	MULCCH-PINE STRAW	40,000.00	41,000.00
E580-336-14	PRUNING AND TRIMMING (PALMS)	150.00	159.00
E580-337-17	HERBICIDE, LANDSCAPED MULCH BED APPLICATION- AREAS 0- 1000 SF	15,000.00	28,000.00
E580-337-18	HERBICIDE, LANDSCAPED MULCH BED APPLICATION- AREAS 1001-2000 SF	35,000.00	52,000.00
E580-337-19	HERBICIDE, LANDSCAPED MULCH BED APPLICATION- AREAS 2001 AND GREATER SF	11.00	27.00

### Delete:

0580-7-27	LANDSCAPE- GROUND COVER, DISTRICT SPECIFIED FROM PROJECT LIST, 7 GALLON	1.00	0.00
0580-7-47	LANDSCAPE- ORNAMENTAL GRASS, DISTRICT SPECIFIED FROM PROJECT LIST, 7 GALLON	1.00	0.00



District Three Contract Administrator