



# FLORIDA'S STRATEGIC INTERMODAL SYSTEM (SIS)

March 2017

Chris Edmonston SIS Planning Manager  
Florida Department of Transportation Systems Planning Office

# Three Sets of Decision Rules

Which facilities are of statewide significance?

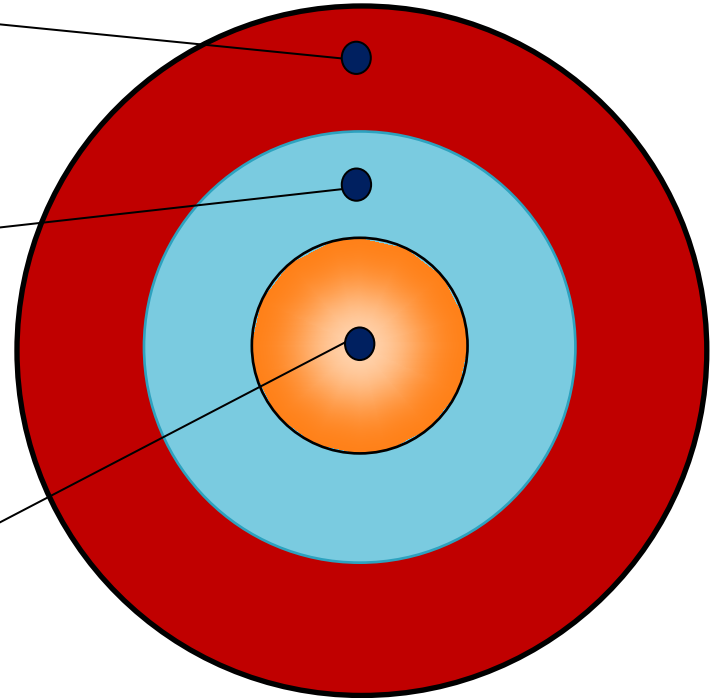
**Designation Criteria**

What investments are needed, and which needs are eligible for SIS and Emerging SIS funding?

**Needs Policies, including Eligibility Criteria**

Which projects will be funded given available resources?

**Prioritization Process**



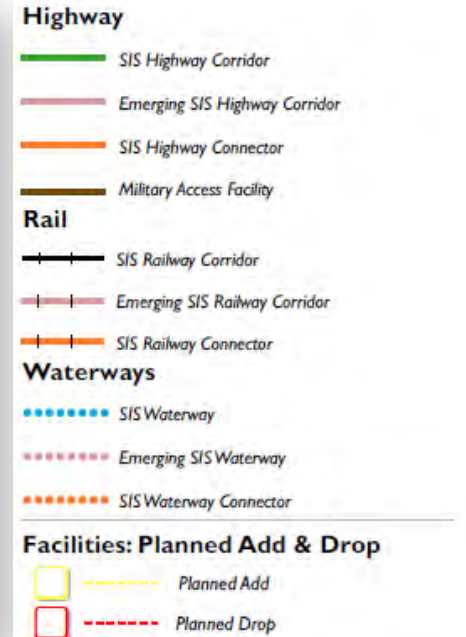
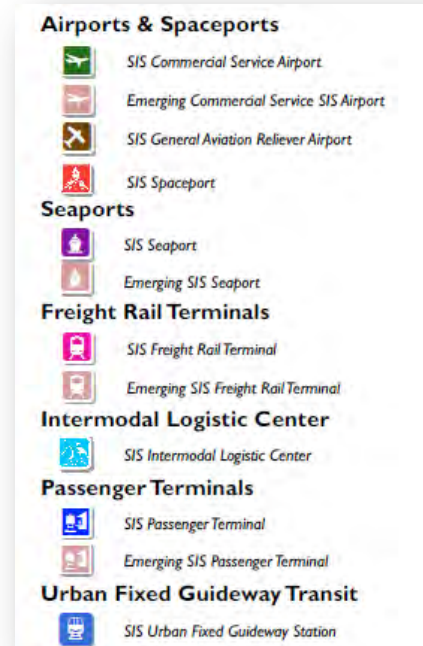
# SIS Designation Criteria

- Florida Transportation Plan
- Strategic Intermodal Systems (SIS) Policy Plan
- Designation Criteria and Thresholds Guidance
- Designation Change Requests (DCR)
- Enterprise Strategic Intermodal System (eSIS) Tool

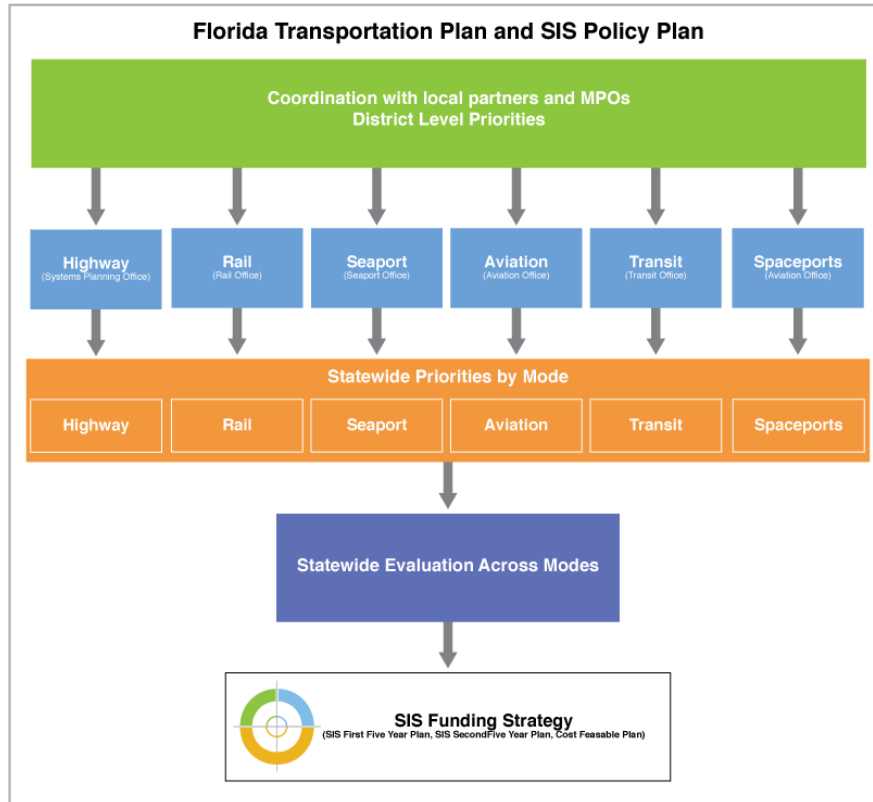


# Total SIS Designations

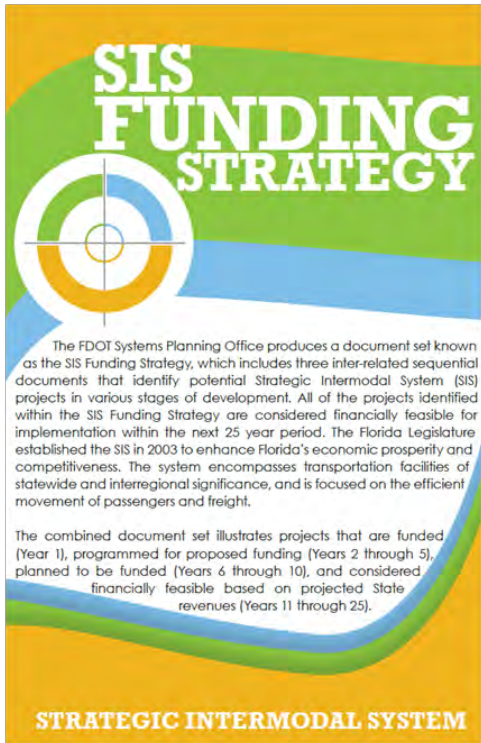
- SIS Airports: 20
- SIS Spaceports: 2
- SIS Seaports: 12
- SIS Intermodal Logistic Center: 1
- SIS Freight Terminals: 8
- SIS Passenger Terminals: 20
- SIS Urban Fixed Guideway Stations: 36
- SIS Highway Miles: 4830
- SIS Railroad Miles: 2325
- SIS Waterway Miles: 1986



# SIS Funding Strategy - Coordination



# SIS Funding Strategy



- ❑ SIS 10-Year Plan
  - First Five-Year Plan (Work Program)
  - Second Five-Year Plan
- ❑ SIS Cost Feasible Plan (Years 11-25)
- ❑ SIS Unfunded Needs Plan



# SIS Statewide Project Prioritization

- *MPO/District Priorities*
- *Consideration of Critical Issues*
- *Available Funding vs. Project Costs*
- *Production Schedule*
- *Continuation of Project Phasing*
- *System Connectivity*
- *SIT and Other Analysis Tools*
- *Senior Management/Executive Guidance*

Systems Planning Office  
and  
Work Program

# SIS Strategic Investment Tool (SIT)



- ❑ Created for SIS highways and road connectors only
- ❑ Automated online tool
- ❑ Utilizing FDOT, US Census Bureau data
- ❑ Individual measures representing 6 goals of Florida Transportation Plan



# Statewide SIS Work Program Development



- SIS Tentative Work Program – Highway
- SIS Tentative Work Program – Modal
- SIS 2<sup>nd</sup> Five Year Plan

# Questions?



**Chris Edmonston, AICP**  
SIS Planning Manager

Florida DOT - Systems Planning Office  
605 Suwannee Street, MS 19  
Tallahassee, Florida 32399-0450

850.414.4813  
[chris.edmonston@dot.state.fl.us](mailto:chris.edmonston@dot.state.fl.us)