

The logo for MPOAC (Metropolitan Planning Organization Advisory Committee) is a dark blue oval with the letters "MPOAC" in white, bold, sans-serif font. It is centered on a horizontal line consisting of two parallel dark blue lines.

MPOAC

Complete Streets Best Practices

Valerie Neilson

July 16, 2018



Agenda



Overview of Best Practices

1. Creating Policies and Building Support
2. Measuring Activity Levels
3. Planning a Connected Network
4. Documenting Performance of Implemented Projects
5. Creating Design Guidelines
6. Prioritizing Projects and Funding
7. Promoting Innovative Projects and Implementation
8. Incorporating Health and Equity

Next Steps

1. Creating Policies and Building Support

- Forward Pinellas
- FDOT
- Palm Beach TPA
- Space Coast TPO
- Hillsborough MPO



2. Measuring Activity Levels



- Charlotte County-Punta Gorda MPO & Hillsborough MPO
- Collier MPO, Hillsborough MPO, & River to Sea TPO
- FDOT
- Hillsborough MPO
- Palm Beach TPA & River to Sea TPO



3. Planning a Connected Network

- City of Bonita Springs
- Space Coast TPO
- Town of Fort Myers Beach



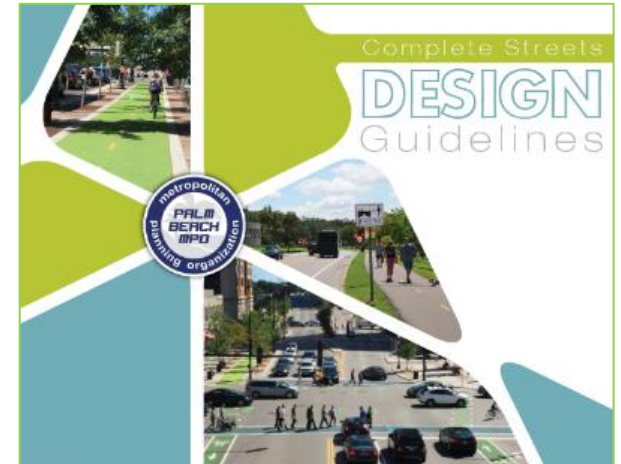
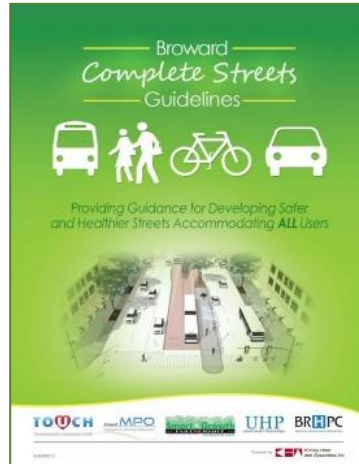
4. Documenting Project Performance

- Forward Pinellas
- Hillsborough County Public Works & Center for Urban Transportation, USF
- MetroPlan Orlando
- University of Florida



5. Creating Design Guidelines

- Broward MPO
- Miami-Dade County
- Palm Beach TPA



6. Prioritizing Projects & Funding

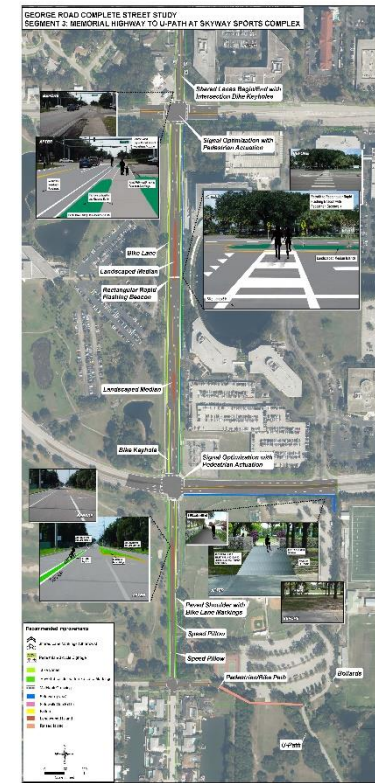
- Martin MPO
- Palm Beach TPA
- Forward Pinellas
- Polk TPO
- Sarasota/Manatee MPO
- West Florida Regional Planning Council
- MTPO for the Gainesville Urbanized Area



7. Innovative Projects & Implementation



- Forward Pinellas
- MTP0 for the Gainesville Urbanized Area
- Hillsborough MPO
- Polk TPO



8. Incorporating Health & Equity

- MetroPlan Orlando
- Palm Beach TPA
- Polk TPO
- Sarasota/Manatee MPO



Next Steps

1. Present to the MPOAC Governing Board
2. Distribute via E-mail and MPOAC SharePoint Site
3. Present at Conferences and Events
4. Modify committee mission to:
 - a. Create statewide Complete Street Priority corridors, tie to Performance Measures, SA \$\$\$
 - b. Provide sample policy for cities/counties through FLC/FAC
 - c. Support creation of statewide data repository re: activity levels





MPOAC



Thank you!

