



M-CORES Program Overview

s. 338.2278, F.S.



MPOAC, October 29, 2019

Purpose

Revitalize rural communities

Encourage job creation

Provide regional connectivity while
leveraging technology

Enhance quality of life and public safety

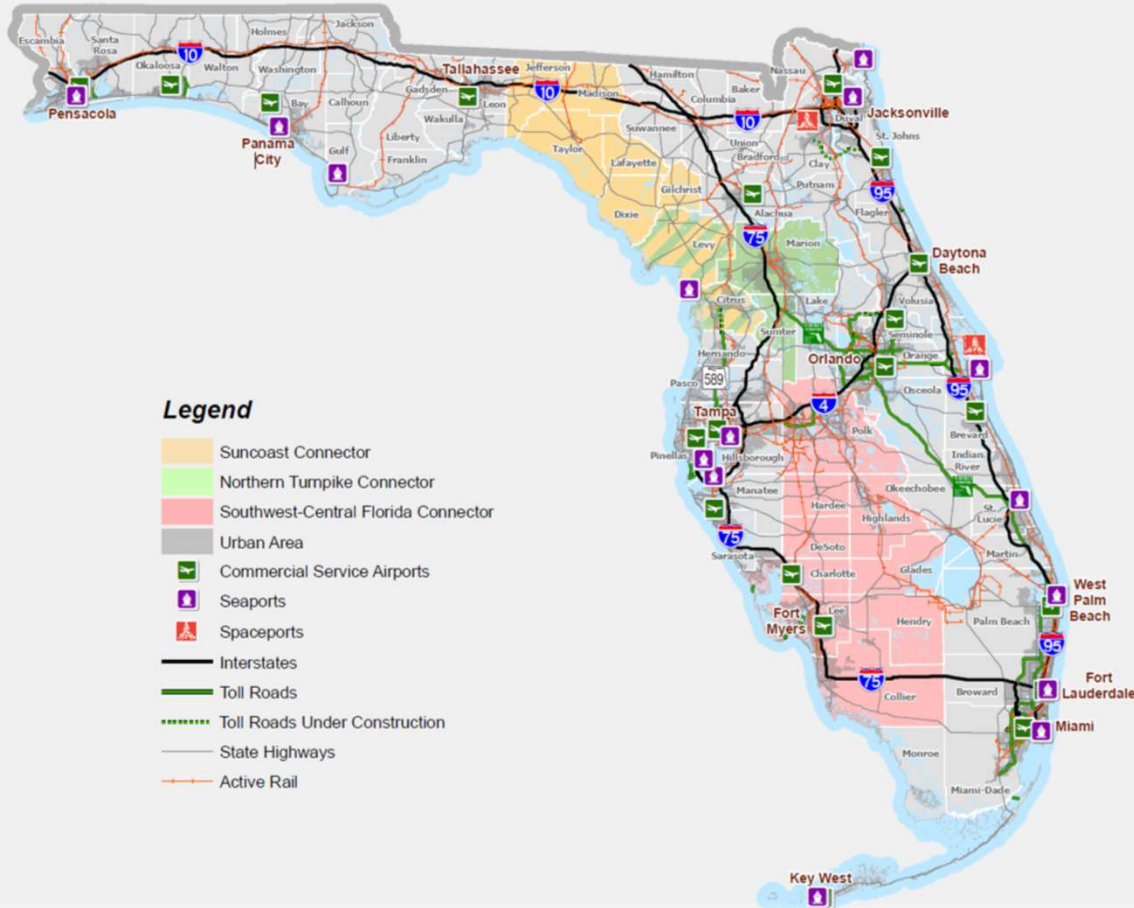
Protect the environment and natural
resources

Objective

Advance construction of
regional corridors intended to
accommodate multiple modes
of transportation and multiple
types of infrastructure



- Hurricane evacuation
- Congestion mitigation
- Trade and logistics
- Broadband, water, sewer connectivity
- Energy distribution
- Autonomous, connected, shared, electric vehicle technology
- Other transportation modes, such as shared-use nonmotorized trails, freight and passenger rail, public transit
- Mobility as a service
- Availability of a trained workforce skilled in traditional and emerging technologies
- Protection or enhancement of wildlife corridors or environmentally sensitive areas
- Protection or enhancement of primary springs protection zones and farmland preservation areas



Legend

- Suncoast Connector
- Northern Turnpike Connector
- Southwest-Central Florida Connector
- Urban Area
- Commercial Service Airports
- Seaports
- Spaceports
- Interstates
- Toll Roads
- Toll Roads Under Construction
- State Highways
- Active Rail

STUDY AREA FACTS

Suncoast Connector

- 8 Counties
- 21 Cities & Towns
- 5,635 Square Miles of Land Area
- 286,827 Residents
- 48,780 Jobs
- 2,217 Lane Miles of State Highway System
- 147 Miles of Active Rail
- 1 Seaport

Northern Turnpike Connector

- 4 Counties
- 20 Cities & Towns
- 3,831 Square Miles of Land Area
- 677,430 Residents
- 136,305 Jobs
- 2,162 Lane Miles of State Highway System
- 158 Miles of Active Rail
- 1 Seaport

Southwest-Central Florida Connector

- 9 Counties
- 36 Cities & Towns
- 9,511 Square Miles of Land Area
- 2,251,543 Residents
- 590,999 Jobs
- 4,793 Lane Miles of State Highway System
- 600 Miles of Active Rail
- 2 Commercial Service Airports

Sources:
 Florida Cities & Towns: <http://www.fscourts.com/florida-cities-county>
 Land Area: <http://www.usa.com/stat/florida-4346-land-area-county-rank.htm>
 Population & Employment: <http://www.census.gov/data/florida/florida-cities-2010.html>
 Lane Miles: <http://www.flhwy.com/statistics/florida-flhwy-mileage-2010.html>
 Rail Miles: <http://www.fdot.com/statistics/active-rail-miles-2010.html>
 Seaports: <http://www.flhwy.com/statistics/florida-flhwy-mileage-2010.html>
 Airports: <http://www.flhwy.com/statistics/florida-flhwy-mileage-2010.html>



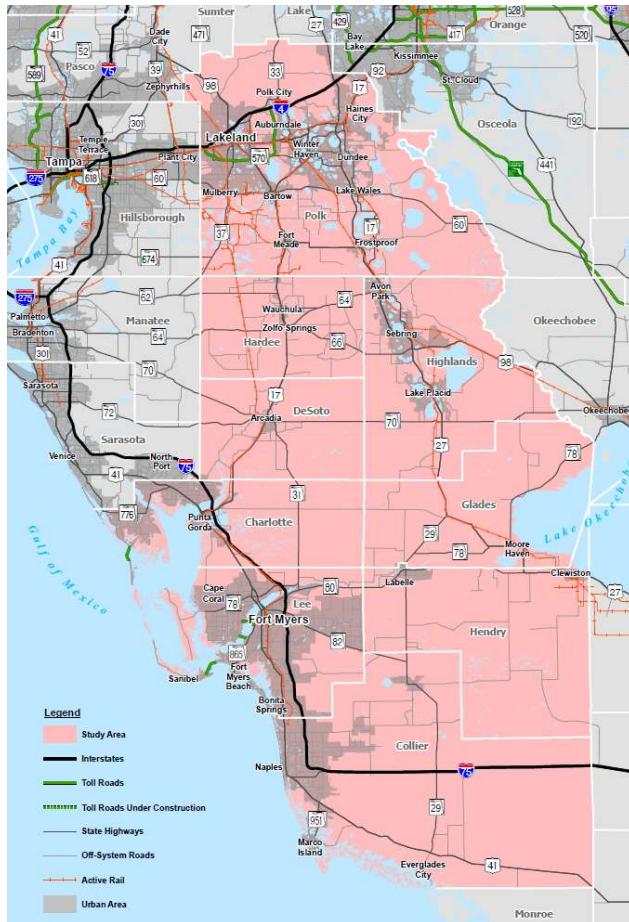
Suncoast Connector

from Citrus to
Jefferson Counties
150 miles



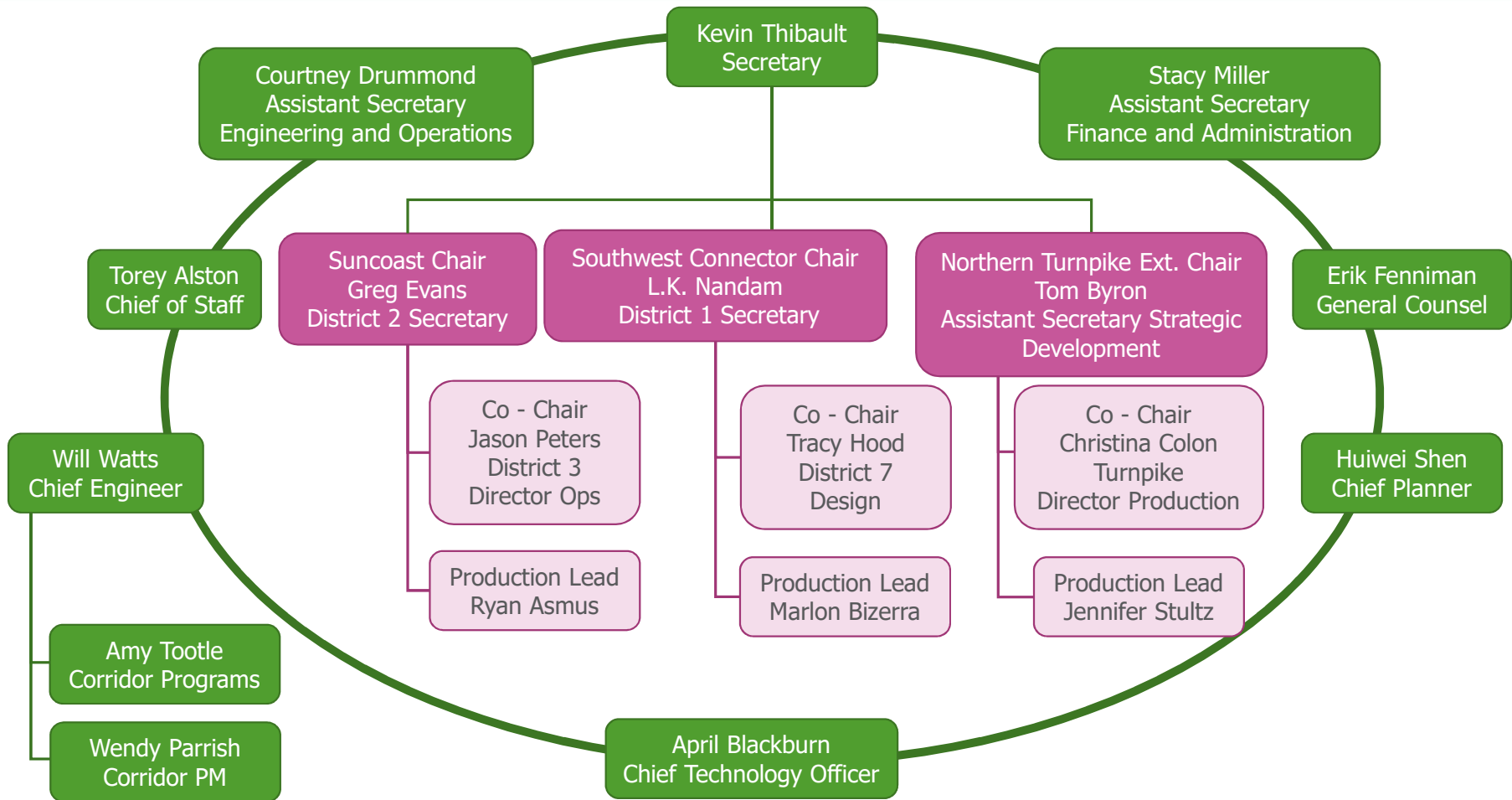
Northern Turnpike Connector

from northern terminus to Suncoast Parkway
40 miles



Southwest-Central Florida Connector

from Collier County to
Polk County
140 miles



Inclusive, Consensus-Building Task Force for Each Study Area

Secretary of Transportation
Appointed Members on
August 1, 2019



Final Report to the
Governor, the President of
the Senate, and the
Speaker of the House of
Representatives by
October 1, 2020



FDOT shall provide affected
local governments with a
copy of the applicable task
force report and project
alignments by
December 31, 2023

Membership

- State agencies/commissions/partnerships
 - Department of Environmental Protection
 - Department of Economic Opportunity
 - Department of Education
 - Department of Health
 - Fish and Wildlife Conservation Commission
 - Department of Agriculture and Consumer Services
 - Public Service Commission
 - Enterprise Florida
 - Department of Business and Professional Regulation
 - CareerSource Florida
- Water management district(s)
- County governments
- Metropolitan planning organization(s)
- Regional planning council(s)
- Community-based organizations
- Environmental groups

Meeting 1

August 2019

- Overview
- Work Plan

Meetings 2, 3

October, December 2019

- Identify Avoidance and Minimization Considerations
- Develop Guiding Principles
- Begin to Develop High-Level Purpose & Need

Meetings 4, 5

March, June 2020

- Identify Mitigation and Enhancement Considerations
- Refine Guiding Principles
- Review Potential Corridor Opportunities; Discuss Implementation Actions

Meetings 6, 7

August, September 2020

- Receive Public Comment on Draft Recommendations
- Develop Draft Final Report
- Adopt Final Report

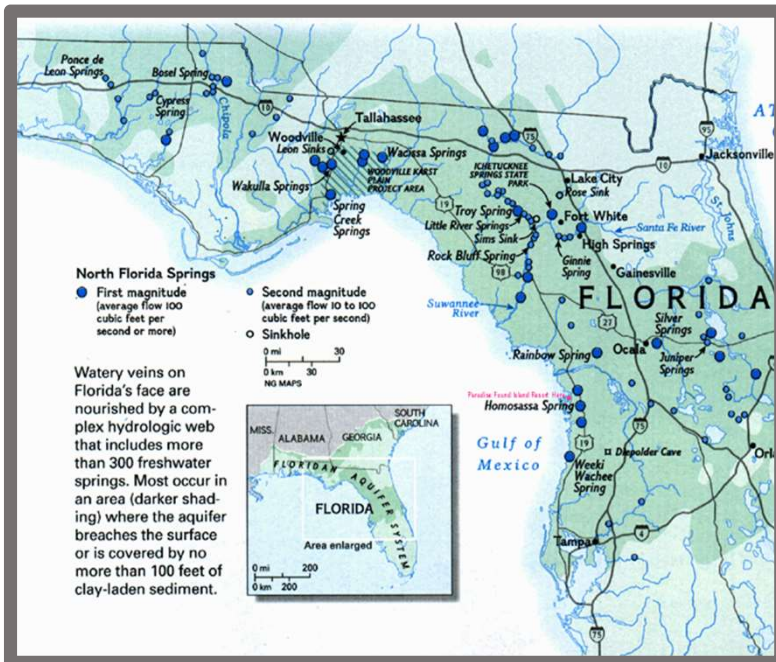
- **Public Comment Period** at every Task Force meeting
- Specific events
 - **Community Open Houses** in each corridor (October, December, March, June)
 - **Community Workshops** in each corridor (January/February & April/May)
 - **Public Comment Period** on draft recommendations (July)
- **Briefings** to regional and local partner organizations
- **Communication 24/7** through website, email, telephone

	Typical Planning Process	Enhancements
Mobility	Moving vehicles	Moving people and freight
Connectivity	Individual facilities or modes	Multiple modes and types of infrastructure including emerging technologies
Opportunity	Reacting to growth and development	Supporting regional and community visions, job growth, workforce development
Resiliency	Responding to system failures	Preparing for future risks and potential disrupters
Environment	Avoiding, minimizing, mitigating impacts	Enhancing communities and the environment
Safety	Reducing safety risks	Safety and security for all users; enhanced emergency evacuation and response



- M-CORES projects are subject to FDOT's **delegated responsibilities** for environmental review, consultation, or other action required under any applicable federal environmental law
- For projects that do not receive federal aid or do not require federal action, FDOT must perform a **project evaluation** considering comparable issues
- Decisions on corridor configuration, project alignment, and interchange locations must be determined in accordance with applicable **FDOT rules, policies, and procedures**
- To the greatest extent practical, corridor configuration, project alignment, and interchange locations must be designed so project rights-of-way are not located within **conservation lands** acquired under the Florida Preservation 2000 Act and the Florida Forever program

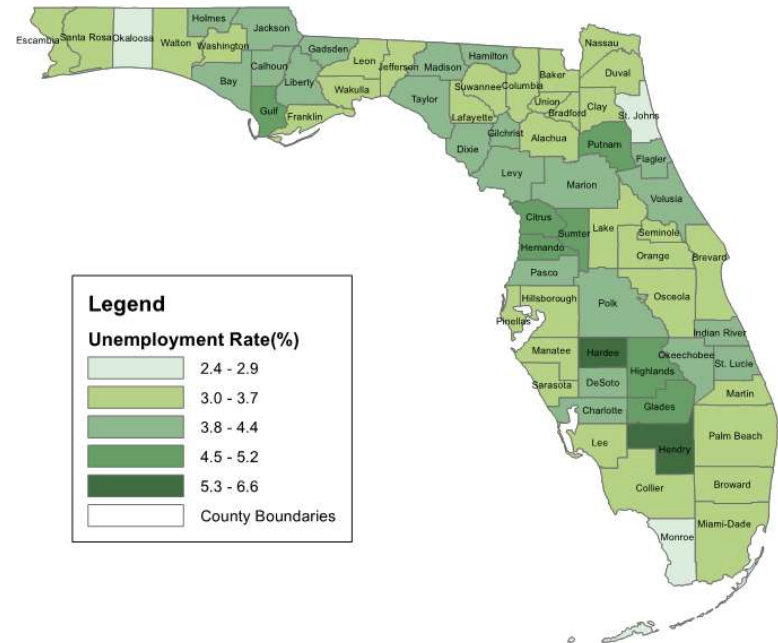
- Task Forces may consider and recommend innovative concepts to **combine right-of-way acquisition with the acquisition of lands or easements to facilitate environmental mitigation or ecosystem, wildlife habitat, or water quality protection or restoration**



- FDOT, in consultation with the Department of Environmental Protection, may incorporate those features into each corridor during the project development phase
- FDOT may accept donations of land for use as transportation rights-of-way or to secure or use transportation rights-of-way for such projects

- FDOT is authorized to provide a road and bridge construction workforce development program
 - Benefit communities in which FDOT is constructing infrastructure projects
 - Promote employment opportunities, including within areas of low income and high unemployment
 - Address construction labor shortage by recruiting and developing skilled workers for infrastructure projects

**Florida Unemployment Rates by County
(Not Seasonally Adjusted)
June 2019**



Corridor	MPOs
Southwest-Central Florida Connector	Collier MPO Lee County MPO Charlotte County-Punta Gorda MPO Heartland Regional TPO Polk TPO
Northern Turnpike Connector	Hernando/Citrus MPO Lake-Sumter MPO Ocala/Marion County TPO
Suncoast Connector	Hernando/Citrus MPO Capital Region TPA

339.175(7)(a), F.S., 23 CFR 450.324	LRTP must give emphasis to transportation facilities which serve national, statewide or regional functions
23 CFR 450.326	TIP must include all regionally significant projects to be funded with non-federal funds
339.175(7)(a), F.S., 23 USC 134(g)(2)	MPOs must coordinate plans if a project is located in more than one MPO
339.175(7)(b), F.S. 23 USC134(i)(2)(E)	The financial plan to include "illustrative" projects in the adopted LRTP

Five templates – one for each corridor, one combination, and one general

Generic language for cost feasible plan and unfunded needs plan

M-CORES Program summary and corridor specific information (as applicable)

Language to be added into public participation guidance

Guidance on the transportation analysis component of LRTP updates

 m·cores



m·cores

MULTI-USE CORRIDORS OF REGIONAL ECONOMIC SIGNIFICANCE

floridamcores.com